

E-Designs Plans Inc.

A western Canadian company from Alberta that designs and ships home plans all across Canada, the US, and Overseas.

For more information about this plan contact the designer at: info@edesignsplans.ca.

Plan #: 2015878 Front Elevation

www.edesignsplans.ca

Call Us 1-855-675-1800



Rear Elevation



Duplex with 1-Car Garage

809 Sq. Ft. Main Floor per Unit

993 Left/1008 Right Sq. Ft. Second Floor

1802 Left/1817 Right Sq. Ft. Total Living Area

Width: 48'-0"
 Depth: 64'-0" (plus decks)
 Bedrooms: 3 per Unit
 Bathrooms: 2 & a Half per Unit
 Laundry: Second Floor
 Walk-in Pantry: No
 Office/Den: No

Plan #: 2015878

Exterior Walls:

Foundation:

Special Ceilings:

Fireplace:

Deck(s):

Veranda:

Attached Garage:

Finished Basement Plan:

2x6 x 9 Ft. (Main Floor)
 2x6 x 8 Ft. (Second Floor)
 4' ICF (Insulated Concrete Form)
 (Other Foundations Available)
 None
 Yes
 Rear
 Yes (Covered)
 Yes (1-Car with 10'x8' Door)
 No

Duplex with 1-Car Garage per Unit. This Duplex is built with a 4 foot foundation. The mechanical is located in the crawl space. From the front covered veranda, you enter into the foyer. From here, you can go directly upstairs or through to the main living area. If you enter from the garage, there is a coat closet and half bath. The L-shaped kitchen has an plenty of cabinet and counter space, as well as an island with a lunch counter. Double garden doors lead out to the large rear deck from the dinette. The living room has a corner gas fireplace for those cooler days. Upstairs there is a large master bedroom over the garage with a walk-in closet and a 4-piece ensuite sporting his and hers sinks. Two more bedrooms with large closets are in the rear, accompanied by a 3-piece bathroom. There is a linen closet in the hallway. Laundry is also located on this level for added convenience. The single car oversize garage has a 10'x8' door.

E-Designs Plans Inc.

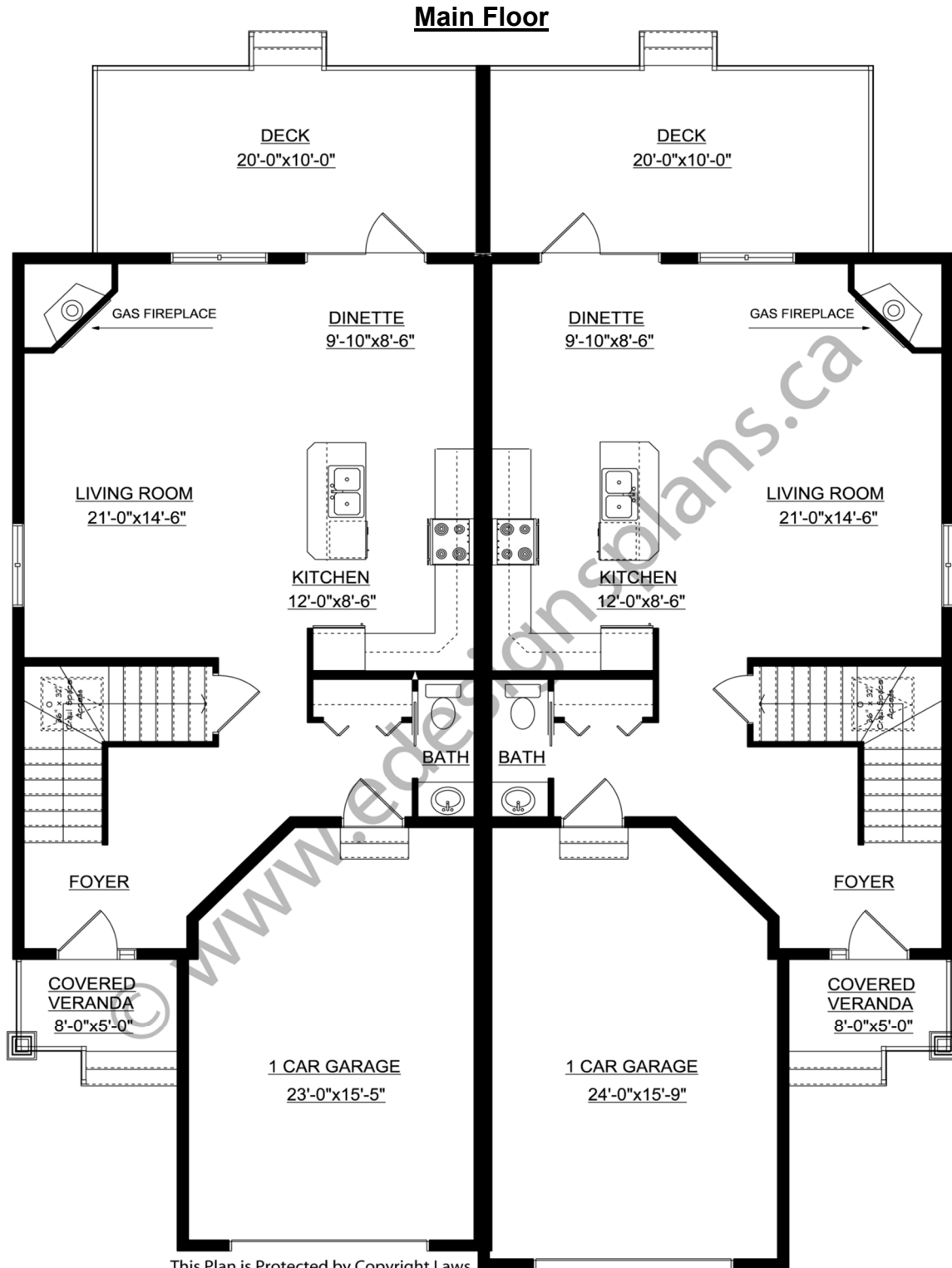
A western Canadian company from Alberta that designs and ships home plans all across Canada, the US, and Overseas.

For more information about this plan contact the designer at: info@edesignsplans.ca.

Plan 2015878

www.edesignsplans.ca

Call Us 1-855-675-1800



This Plan is Protected by Copyright Laws

PROTECTED BY COPYRIGHT LAWS.
PROPERTY OF **E-DESIGNS PLANS INC.**

E-Designs Plans Inc.

A western Canadian company from Alberta that designs and ships home plans all across Canada, the US, and Overseas.

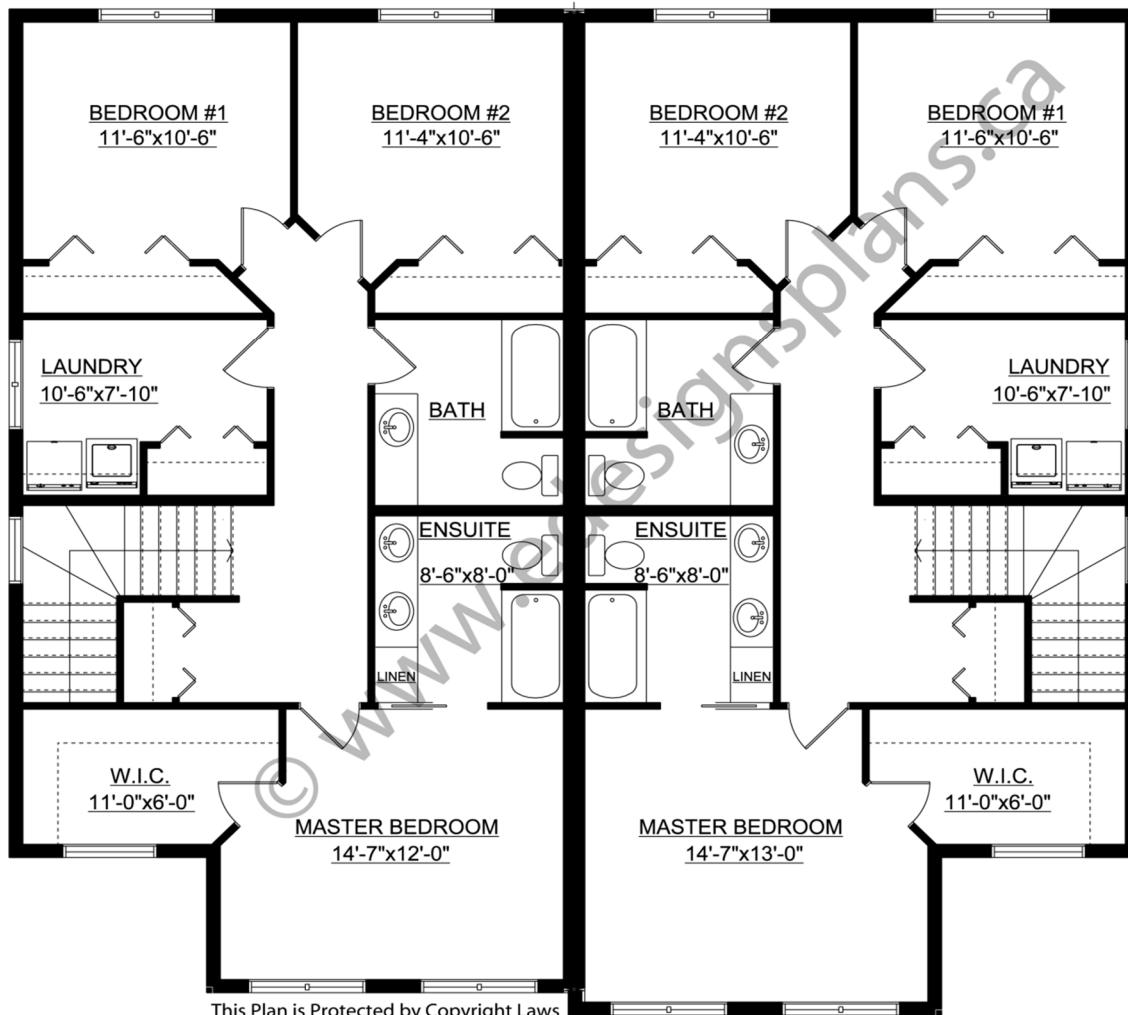
For more information about this plan contact the designer at: info@edesignsplans.ca.

Plan 2015878

www.edesignsplans.ca

[Call Us 1-855-675-1800](tel:1-855-675-1800)

Second Floor



This Plan is Protected by Copyright Laws

PROTECTED BY COPYRIGHT LAWS.
PROPERTY OF **E-DESIGNS PLANS INC.**