

E-Designs Plans Inc.

A western Canadian company from Alberta that designs and ships home plans all across Canada, the US, and Overseas.

For more information about this plan contact the designer at: info@edesignsplans.ca.

Plan #: 2005207 Front Elevation

www.edesignsplans.ca

[Call Us 1-855-675-1800](tel:1-855-675-1800)



Rear Elevation

Bi-Level with 2-Car Garage
1704 Sq. Ft. Main Floor

Width: 82'-6"
Depth: 63'-6"
Bedrooms: 5
Bathrooms: 3
Main Floor Laundry: Yes
Walk-in Pantry: Yes
Office/Den/Flex Room: Yes

Plan #: 2005207

Exterior Walls: 2x6 x 9 Ft. (Main Floor)
Foundation: 9' ICF (Insulated Concrete Form) (Other Foundations Available)
Special Ceilings: Vaulted Bedroom
Fireplace: No
Deck(s): Rear
Veranda: No
Attached Garage: Yes (2-Car with 10'x8' Doors)
Finished Basement Plan: Yes

Bi-Level with 2-Car Garage. A Split Entry Bi-Level with access into the kitchen area directly from the 2-car garage. The rear of the garage has a smaller 7'x6' door to store a small mower or golf cart. An open concept design in the kitchen, dining and great room with access to a rear deck that is the full length of the house. The kitchen has a corner pantry and large island with additional seating. There are three bedrooms on this level with the master having its own walk-in-closet and ensuite. The deck can be accessed from the master suite as well. Laundry is accommodated on the main floor. Two more bedrooms, a hobby room, and a 4-piece bathroom are on the lower level, along with a large recreation room. The mechanical room is large with storage, plus there is additional storage under the stairs. The front foyer has high ceilings and two sidelites on each side of the entrance door. The stone trim, many corners, and multiple types of siding give this home a modern look with great aesthetics. A beautiful home!

E-Designs Plans Inc.

A western Canadian company from Alberta that designs and ships home plans all across Canada, the US, and Overseas.

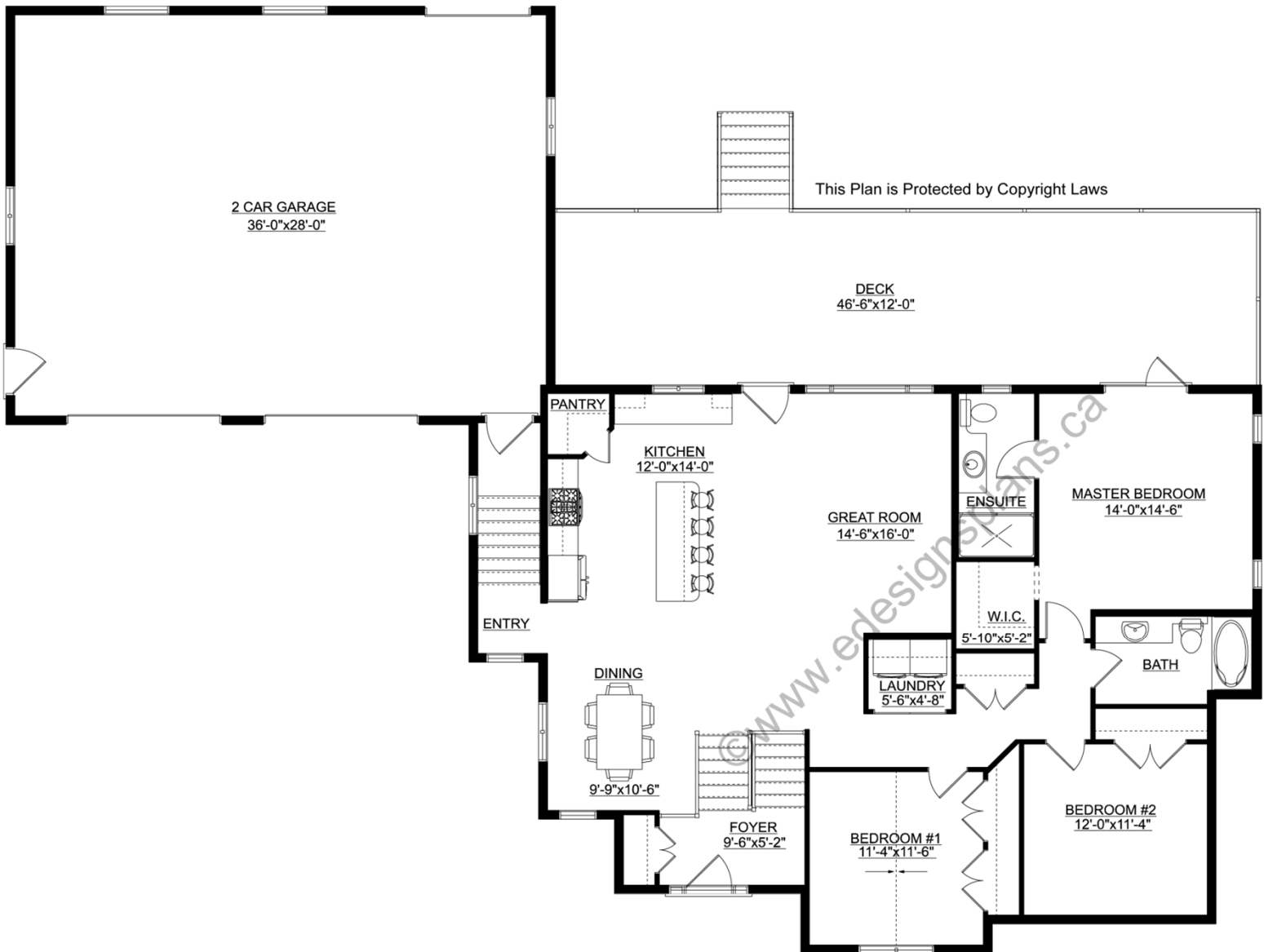
For more information about this plan contact the designer at: info@edesignsplans.ca.

Plan 2005207

www.edesignsplans.ca

[Call Us 1-855-675-1800](tel:1-855-675-1800)

Main Floor



PROTECTED BY COPYRIGHT LAWS.
PROPERTY OF **E-DESIGNS PLANS INC.**

E-Designs Plans Inc.

A western Canadian company from Alberta that designs and ships home plans all across Canada, the US, and Overseas.

For more information about this plan contact the designer at: info@edesignsplans.ca.

Plan 2005207

www.edesignsplans.ca

[Call Us 1-855-675-1800](tel:1-855-675-1800)

Basement

