

# E-Designs Plans Inc.

A western Canadian company from Alberta that designs and ships home plans all across Canada, the US, and Overseas.

For more information about this plan contact the designer at: [info@edesignsplans.ca](mailto:info@edesignsplans.ca).

**Plan #: 2021373 Front Elevation**

[www.edesignsplans.ca](http://www.edesignsplans.ca)

[Call Us 1-855-675-1800](tel:1-855-675-1800)



**Right Elevation**



**Rear Elevation**

## **ICF Bungalow with 3-Car Angled Garage** 1932 Sq. Ft. Main Floor

Width:	105'-0"
Depth:	76'-6"
Bedrooms:	4
Bathrooms:	3 & a Half Bath
Main Floor Laundry:	Yes
Walk-in Pantry:	No
Office/Den/Flex Room:	Yes

## **Plan #: 2021373**

Exterior Walls:	9'-0" ICF (Main Floor)
Foundation:	9'-6" ICF (Insulated Concrete Form) (Other Foundations Available)
Special Ceilings:	Vaulted Kitchen & Dining Room
Fireplace:	Yes
Deck(s):	Rear (Partially Covered)
Veranda:	Yes (Covered) & Rear Patio
Attached Garage:	Yes (3-Car with 18'x8'/10'x8' Doors)
Finished Basement Plan:	Yes

**ICF Bungalow with Walkout & 3-Car Angled Garage.** Experience the benefits of ICF construction. With a finished walkout basement, this home has over 3800 sq. ft. of heated living space. The main floor features a vaulted ceiling over the L-shaped kitchen with a walk-through pantry, an island with a lunch bar, and a garden door from the dining area leads to a partially covered rear deck. The master bedroom includes a four-piece ensuite and walk-in closet, accompanied by two large children's rooms. The heated mudroom, adjacent to an extra-large laundry room and half bath, connects to an angled garage accommodating 3-4 cars and a work area. The walkout basement offers a large guest bedroom, exercise room, storage room, a three-piece bath beside a large theater room, and a 34-foot-long open family room with large windows and garden door access to the partially covered patio. Enjoy movies in the theater room with no windows to maintain a dark and quiet atmosphere. A covered front veranda with craftsman-style pillars completes this exceptional home design.

# E-Designs Plans Inc.

A western Canadian company from Alberta that designs and ships home plans all across Canada, the US, and Overseas.

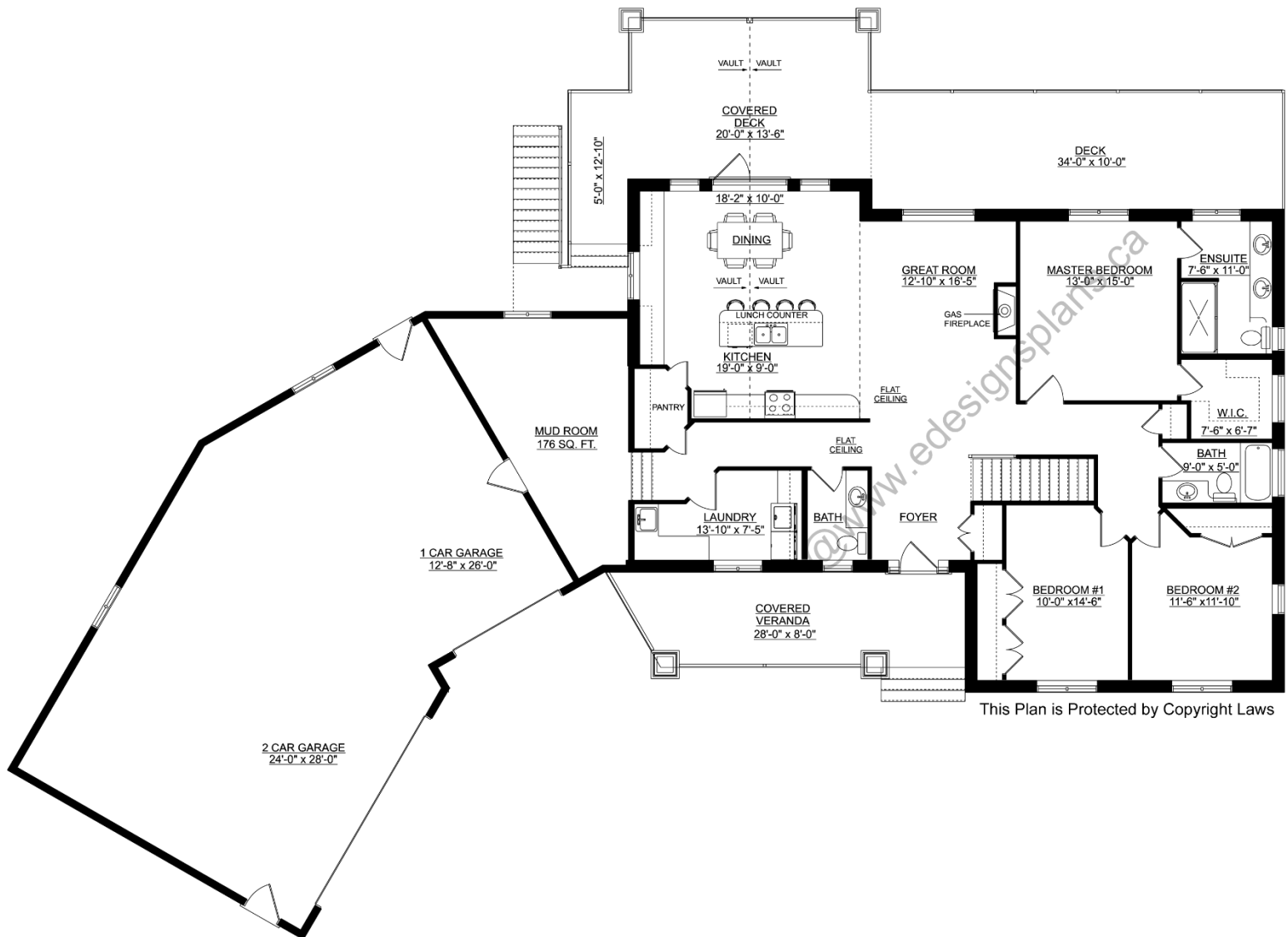
For more information about this plan contact the designer at: [info@edesignsplans.ca](mailto:info@edesignsplans.ca).

Plan 2021373

[www.edesignsplans.ca](http://www.edesignsplans.ca)

[Call Us 1-855-675-1800](tel:1-855-675-1800)

## Main Floor



# ***E-Designs Plans Inc.***

A western Canadian company from Alberta that designs and ships home plans all across Canada, the US, and Overseas.

For more information about this plan contact the designer at: [info@edesignsplans.ca](mailto:info@edesignsplans.ca).

Plan 2021373

[www.edesignsplans.ca](http://www.edesignsplans.ca)

[Call Us 1-855-675-1800](tel:1-855-675-1800)

## Basement

