

E-Designs Plans Inc.

A western Canadian company from Alberta that designs and ships home plans all across Canada, the US, and Overseas.

For more information about this plan contact the designer at: info@edesignsplans.ca.

Plan #: 2013727 Front Elevation

www.edesignsplans.ca

Call Us 1-855-675-1800



Rear Elevation



Bungalow with Single Car Garage

1762 Sq. Ft. Main Floor

Width: 71'-0"
 Depth: 41'-0" (plus deck)
 Bedrooms: 5
 Bathrooms: 3
 Main Floor Laundry: Yes
 Walk-in Pantry: No
 Office: Yes

Plan #: 2013727

Exterior Walls: 2x6 x 8 Ft. (Main Floor)
 Foundation: 9' ICF (Insulated Concrete Form) (Other Foundations Available)
 Special Ceilings: Inverted Vault in Bedroom
 Fireplace: Yes
 Deck(s): Rear (Covered)
 Veranda: Yes
 Attached Garage: Yes (1-Car with 10'x8' Door)
 Finished Basement Plan: Yes

Bungalow with Single Car Garage. The front of this bungalow has a covered veranda with decorative posts giving it that country-style charm. From the veranda or the garage, you enter a large mudroom together with the main floor laundry. This leads into the U-shaped kitchen area, which has a centre island. The nook area has double garden doors leading to the rear covered deck. The great room is in the front of the house and has a corner fireplace. There are three bedrooms on this level and a 3-piece bathroom. The master bedroom has a walk-in closet and its own 5-piece ensuite. A single car garage with a 10'x8' overhead door is attached. Down the stairs leads to a large fully finished family room with attached play area for kids or toys. There are also two more bedrooms on this level, a 3-piece bath, an office, and a huge storage area. Lots of closets and room for everyone in this plan.

PROTECTED BY COPYRIGHT LAWS.
 PROPERTY OF **E-DESIGNS PLANS INC.**

E-Designs Plans Inc.

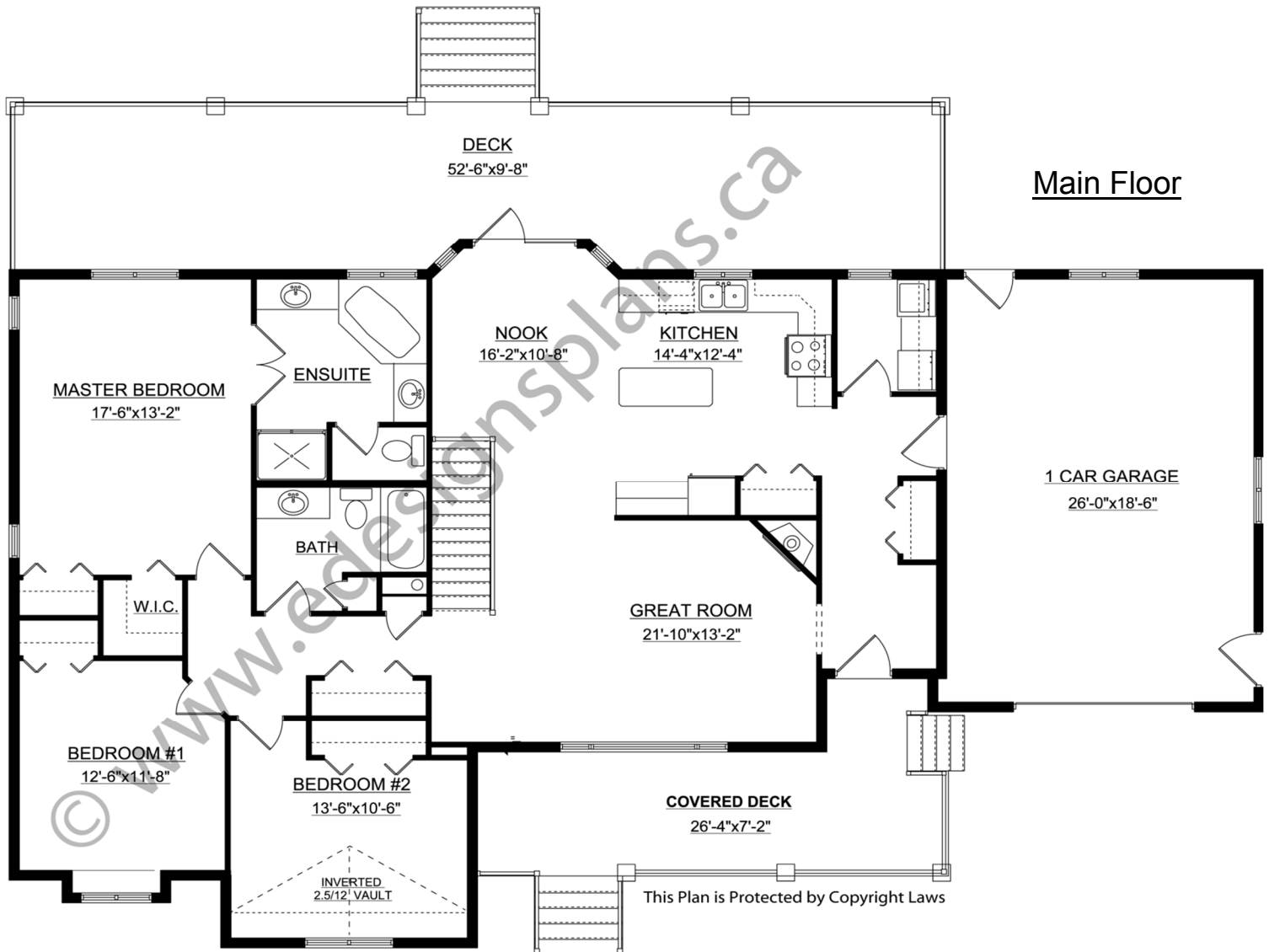
A western Canadian company from Alberta that designs and ships home plans all across Canada, the US, and Overseas.

For more information about this plan contact the designer at: info@edesignsplans.ca.

Plan 2013727

www.edesignsplans.ca

[Call Us 1-855-675-1800](tel:1-855-675-1800)



PROTECTED BY COPYRIGHT LAWS.
PROPERTY OF **E-DESIGNS PLANS INC.**

E-Designs Plans Inc.

A western Canadian company from Alberta that designs and ships home plans all across Canada, the US, and Overseas.

For more information about this plan contact the designer at: info@edesignsplans.ca.

Plan 2013727

www.edesignsplans.ca

[Call Us 1-855-675-1800](tel:1-855-675-1800)

