

E-Designs Plans Inc.

A western Canadian company from Alberta that designs and ships home plans all across Canada, the US, and Overseas.

For more information about this plan contact the designer at: info@edesignsplans.ca.

Plan #: 2012653 Front Elevation

www.edesignsplans.ca

Call Us 1-855-675-1800



Rear Elevation

Bungalow with Walkout & 2-Car Garage

1493 Sq. Ft. Main Floor

Width: 47'-0"
 Depth: 58'-7"
 Bedrooms: 2
 Bathrooms: 2 & a Half Bath
 Main Floor Laundry: Yes
 Walk-in Pantry: No
 Office/Den: No

Plan #: 2012653

Exterior Walls: 2x6 x 8 Ft. (Main Floor)
 Foundation: 9' ICF (Insulated Concrete Form) (Other Foundations Available)
 Special Ceilings: Vaulted over Kitchen/Great Room
 Fireplace: No
 Deck(s): Rear
 Veranda: No
 Attached Garage: Yes (2-Car with 16'x8' Door)
 Finished Basement Plan: Yes

Bungalow with 2-Car Garage. This plan would work on the farm or on a larger City lot. The special feature in this plan is the 4-way vault over the kitchen and great room, making the living space look much larger. Laundry is situated right inside the garage with a stackable unit. The pantry is located in the same area. The counter in the kitchen also has a lunch bar. Exit the nook to a nice-sized rear deck. The master bedroom has a 4-piece ensuite and wall to wall closets. A spare bedroom is situated on this floor as well. Down the stairs, enter the open recreation room. This walkout basement plan shows a sewing room, hobby room, and exercise room, however a couple of extra bedrooms could be accommodated here instead if needed. A huge storage room is part of the mechanical room. The 2-car garage has a 16' overhead door and has room at the back for a workbench area.

PROTECTED BY COPYRIGHT LAWS.
 PROPERTY OF **E-DESIGNS PLANS INC.**

E-Designs Plans Inc.

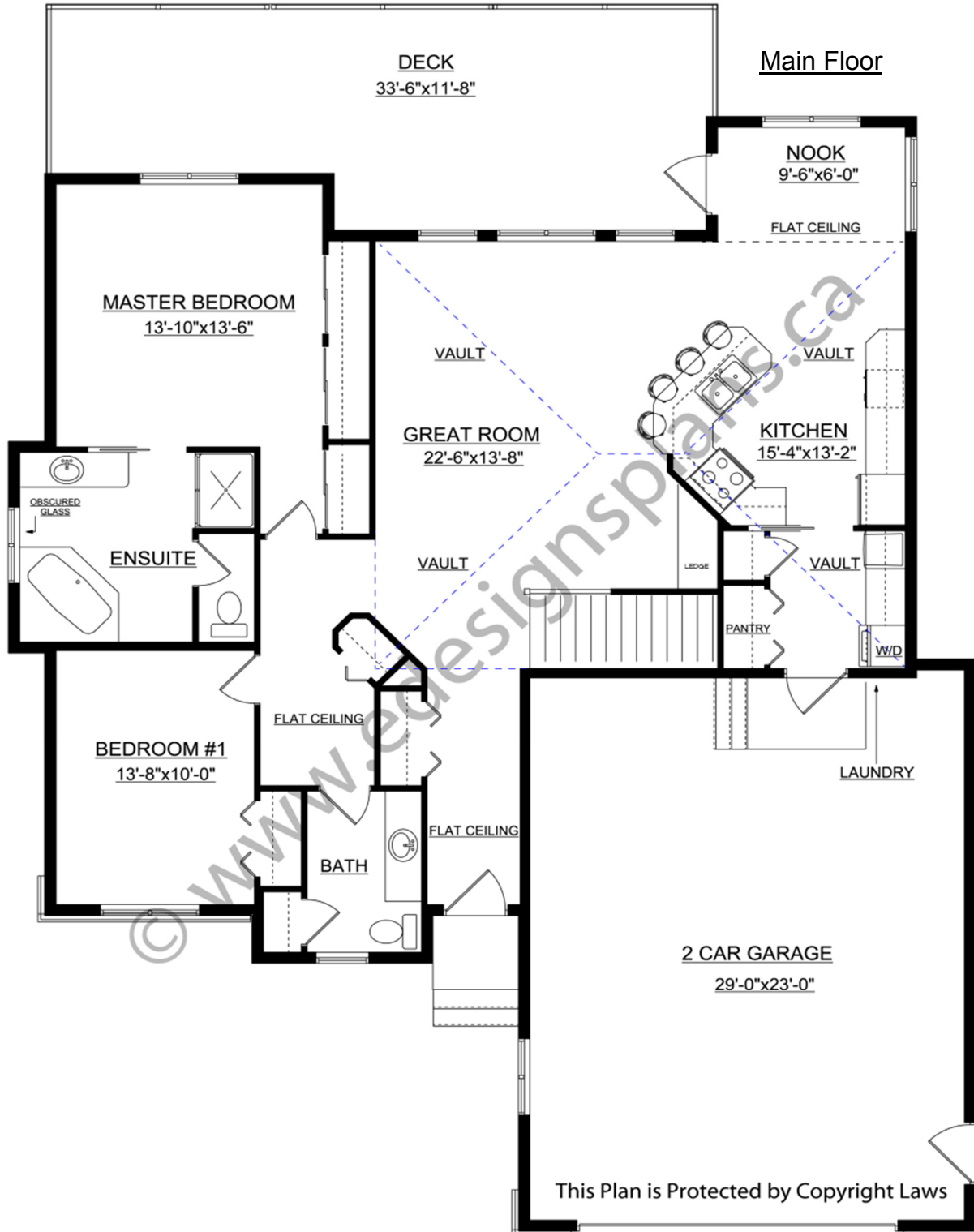
A western Canadian company from Alberta that designs and ships home plans all across Canada, the US, and Overseas.

For more information about this plan contact the designer at: info@edesignsplans.ca.

Plan 2012653

www.edesignsplans.ca

Call Us 1-855-675-1800



PROTECTED BY COPYRIGHT LAWS.
PROPERTY OF **E-DESIGNS PLANS INC.**

E-Designs Plans Inc.

A western Canadian company from Alberta that designs and ships home plans all across Canada, the US, and Overseas.

For more information about this plan contact the designer at: info@edesignsplans.ca.

Plan 2012653

www.edesignsplans.ca

[Call Us 1-855-675-1800](tel:1-855-675-1800)

